

Types of Geocaches?

Traditional Cache

A container at the listed location with a log sheet.

Multi-Cache

A trail to follow. Go to the location listed and find some clues to the next location, until you can work out the final co-ordinates where there will be a container with a log sheet.

Mystery or Puzzle Cache

A puzzle to solve maybe at home or 'in the field' that reveals the final co-ordinates where there will be a container with a log sheet.

Event Cache

A real life event organised to meet and chat with other geocachers. The event location is at the listed co-ordinates.

Sizes of Geocaches?

Geocaches can vary in shape and sizes. Here are some examples of the different sizes.



Are There Any Rules?

- ☺ Only leave safe and family-friendly items.
- ☺ Don't leave any items of food or drink.
- ☺ Geocaches should not be buried.
- ☺ Observe local laws and obey signs.
- ☺ Respect property and the environment.
- ☺ Move on trackables promptly.
- ☺ Have fun!

What is a Trackable?

Unlike swag, a trackable is a physical geocaching 'game piece', a tag or a geocoin. You will often find them in geocaches or see them at events. Each trackable is etched with a unique code that can be used to log its movements online on geocaching.com as it travels in the real world. Some of these items have travelled hundreds or thousands of miles, thanks to geocachers who help to keep them moving and put them in other geocaches or events.



Do not keep it, drop it instead into another event or leave it in another geocache.

Remember to also log its travels online.

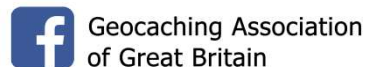
Interested in Trying Geocaching?



The Geocaching Association of Great Britain was set up to promote geocaching in the UK, to help new geocachers learn about the game and to help others understand geocaching.

If you would like to try some geocaching, the GAGB can try to find a geocacher in your area who is willing to meet you and escort you on your first geocaching trip.

If you want some help, send an email to contact@gagb.org.uk or visit gagb.org.uk.



The Geocaching Association of Great Britain

What is Geocaching?

Geocaching (pronounced Geo-cash-ing) is a real-world, outdoor treasure hunting game. We use a GPS receiver or smart phone and navigate to a specific set of co-ordinates to find a geocache (container) hidden at that location. Geocaches can be found anywhere; there are over three million geocaches hidden worldwide and over five million people who play the game. Imagine a pastime that can be enjoyed by the whole family and combines technology with outdoor adventure:

- ☺ Gets you out into the fresh air.
- ☺ Gets you walking a long or a little way.
- ☺ Introduces you to unusual/interesting/beautiful locations.
- ☺ Encourages the kids to ask, "Can we go for a walk today?"
- ☺ Is so much fun, you will want to go out for a walk too, maybe each time a little bit further and somewhere new.



What Do You Need?

A sense of fun and adventure, and either a smart phone or GPS receiver.

☺ A sense of adventure to go out and find places you might never have otherwise known about and see things which would have passed you by. Imagine sitting on a small hill watching two young foxes playing together in the field below you while a red kite wheels and performs aerobatics over your head.

☺ There are geocaching apps available for smart phones, or you can use a specialist GPS receiver. GPS receivers are available from around £80 in the UK. Make sure it has a walking map.



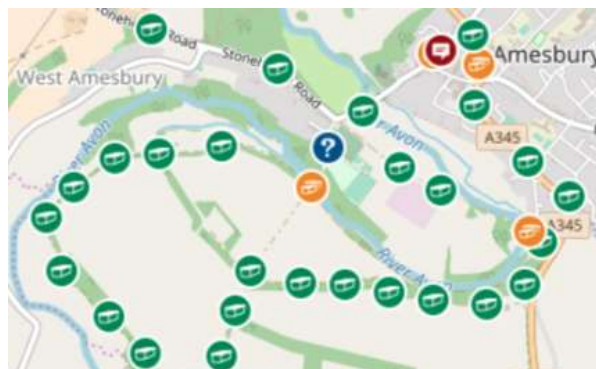
Geocaches are listed on several websites; the most popular is geocaching.com, but also opencache.uk, or terracaching.com. Sign up for free, log in and search for geocaches in your local area. To start with select a regular or large size traditional geocache with an easy (1/1) difficulty and terrain. You will be surprised how close your nearest one is. You can find information and the co-ordinates for the geocache, save it to your GPS receiver or smart phone and off you go! Geocaches can be hidden in towns or the countryside. Look at the attributes on the geocache page for parking waypoints, public transport, is recommended for kids, whether bicycles are allowed, or if there is a hike involved.

Finding Your First Geocache?

Getting started is easy.

Step 1: Plan

- ☺ Download the Geocaching app or visit geocaching.com.
- ☺ Create a free account and log in.
- ☺ Search for a place or postcode that you are interested in visiting and save some geocaches (often abbreviated to 'caches') to your GPS receiver or your smart phone. Are you looking for an adventure for the entire family? Maybe an afternoon in a dog-friendly park?
- ☺ Pack water, food and extra clothing.



Step 2: Hunt

Mark your car or a well-marked trail as a waypoint to ensure your safe return. Use the map or compass to navigate to the geocache location following paths as much as possible, the best route may not be a straight line. Enjoy the walk and look out for interesting places along your way. Within 15 meters of the geocache location rely on your eyes rather than your GPS receiver; some are often very cleverly camouflaged.

Step 3: Find

Geocaches vary greatly in size and appearance. Some can be very easy to find, others can be very sneaky and require a bit of a hunt! You could find anything from a large, clear plastic container, to film canisters, a fake rock with a secret compartment or is it an extremely small magnetic nano? So, how do you find the geocache? The first step is to get a general idea of the geocache size. If you have trouble, look at the hint, past logs, photos and the geocache description.

**Hurray! You found your first geocache.
Congratulations!**

Step 4: Log

- ☺ Sign the logbook.
- ☺ If you take some swag, swap it for something of equal or greater value.
- ☺ If you find a trackable and if you know what to do, help it on its journey,
- ☺ Rehide the geocache as you found it.
- ☺ Share your geocaching stories and photos in your online log so the owner and others can read about your adventure.

Swag

Swaps such as toys, games, and trackable items can be found in geocaches. You don't have to swap anything, but it can be fun. It is only fair play that if you take something, you should leave something in exchange, to keep the game fun.

Trade equal, trade up or DON'T trade.