




SEEKER

An aerial photograph of a car show held on a large green grassy field. Numerous cars of various colors and models are parked in rows. Several tents and pop-up structures in blue, green, and white are scattered across the field. A large white tent is visible on the right side. In the background, a tennis court and some buildings are partially visible.

The Quarterly Magazine of the 
ISSUE: 53 *Spring 2024*

MEET THE COMMITTEE!

	Arthur Griffiths (Griff Grof) Chair		Lewis Grant (NevilleDog_n_Humans) Secretary and Editor
	Caz Turver (border Caz) Treasurer		Chris Carpenter (Saza36) Webmaster
	Chris Warren (Stoke Bunnies) GLAD		Paul Bevan (big eddie) Retail and Fundraising
	Joanne Mitchell (joe222s) Social Media		Bev Bradley (Firefox.3) Outreach and Events
	Stuart Howe (stuarthowe11) GAGB Friends and Reps		GAGB Mascot

THE GAGB

GAGB started in 2003 to provide a connection between the wider geocaching community and landowners, media and others. We provide a database of landowner agreements, sort issues out with access, sell merchandise and introduce the hobby to newcomers plus lots more...

Find out more by visiting our website [here](#)...



Seeker is published and edited by Lewis Grant (NevilleDog_n_Humans) for the GAGB. No part of this document may be reproduced, distributed or transmitted in any form or method; unless written permission is obtained with the copyright holders. All photographs remain the property of the article owner unless otherwise stated. Care is taken to ensure all content is correct at time of publish but opinions are of individuals only.

Cover: Piratemanía 15 from above by David State (CamoJimny)

SEEKER NEEDS YOU!

We love receiving our readers articles and every one is considered for publication. All submissions should be submitted to editor@gagb.org.uk and any articles used will receive a 10% discount to use in the GAGB shop!



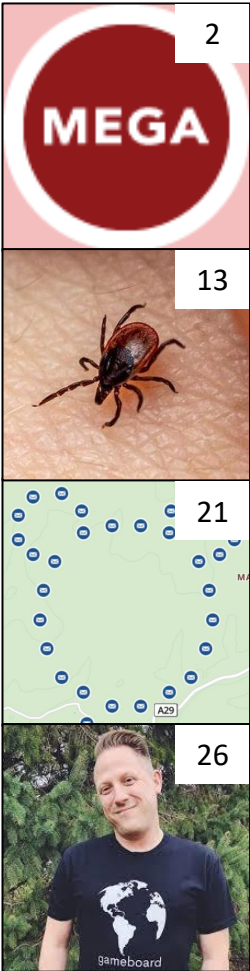
UPCOMING ISSUES

Issue 54 – Out Aug 24 (Content Deadline: 1st Jul 24)

Issue 55 – Out Nov 24 (Content Deadline: 1st Oct 24)

CONTENTS

- 1 A WARM WELCOME
- 2 GAGB SWAG WEEKEND REVIEW
- 3 MEGA EVENTS OVER TIME...
- 12 MEGA SEASON 2024
- 13 DEALING WITH ANIMALS
- 16 GAGB REGIONS
- 17 CHANNEL ISLANDS: GUERNSEY
- 19 CHANNEL ISLANDS: JERSEY
- 21 GEO-ART...
- 23 PUZZLE CORNER AND COMPETITION TIME
- 26 CACHER CHATS WITH THE GEOCACHING VLOGGER
- 29 GEOCACHING BY CRUISE SHIP
- 31 YE OLE SURVEY MONUMENTS
- 33 GAGB CITO WEEKS UPDATE
- 34 AN A TO Z OF THE GAGB...
- 35 UPCOMING MEGA EVENTS
- GAGB MEMBER DISCOUNTS



A WARM WELCOME...

By Arthur Griffiths (Griff Grof), Chair

Hello, I hope this issue of Seeker finds you well. Spring is here at last, the days are getting longer, and there is a lot to look forward to as we approach the summer and with it this year's mega events, alongside many caching adventures.



We have been very busy behind the scenes since the release of Issue 52. We have developed, tested, and launched a brand new in-house email system to send out our monthly newsletter and Seeker. This replaces Mailchimp, which became unaffordable following a growth in our active member base. The new system will save us around £60 per month. I must issue a huge thank you to both Chris Carpenter (Saza36) and Sharon Reid (sharant) for all their hard work creating an effective system from the ground up in just three months.

In addition, we have negotiated two further discounts for our members. The first is 5% off at the Outdoor GPS Shop, which stocks a wide range of GPS units, GPS watches, and related accessories. The second is a very generous 15% discount at Mountain Warehouse, one of the UK's leading outdoor retailers. [You can view the discount codes here.](#)

We have launched this year's GAGB Geocaching Awards. There are five categories: Best Physical Cache, Best Non-Physical Cache, Best Series, Geocacher of the Year, and - new for 2024 - the Most Helpful Landowner Award. Be sure to nominate your favourites today by completing the [online form here](#). The winners will be announced at a GAGB event in September, which we are in the process of organising.

We were pleased to attend the Geocoin Fair #6 in Milton Keynes in mid-April, and several committee members will be present at the Caledonian Cachefest in Moffat, Southern Scotland. There will be a GAGB stall at the main event ([GCAJC92](#)) on 4th May - we hope to see you there.

This is another bumper edition of Seeker. We have features on the UK's previous Mega events, geocaching on the Channel Islands, the revived YOSM series, geoart, geocaching by cruise ship and geocaching in the Channel Islands. In addition, check out our interview with Joshua Johnson aka The Geocaching Vlogger, and challenge yourself with this season's competition and puzzle corner. You can also read about our recent SWAG Weekend - thanks to all who participated.

Enjoy, and happy caching!

GAGB SWAG WEEKEND REVIEW

Find out more about our 2024 SWAG Weekend...



Every year the GAGB SWAG ("Stuff We All Get") Weekend takes place to encourage geocachers to stock up the geocaches they find with good quality SWAG and this year the event took place over the 29th March to 1st April 2024.

A couple of geocachers have been in touch with us to tell their stories.

Cacheandwalk told us after completing the Spitfire Saunter Series ([GCAHNN9](#)) and finding the bonus final cache it was empty! Thus, they left plenty of SWAG to fill up the container for future finders to find – we thank them for taking the time to get involved!

The Spud Squad got in touch to tell us that they are always equipped with good quality SWAG including gold coins and suchlike allowing them to be ready to fill geocaches up at all times. Over the

GAGB Weekend they had found 12 Shouldham Shoe Shine ([GCANJ6W](#)) and the container was sadly empty, so they generously topped it up. We would like to take this opportunity to thank them for taking the time to get involved!



Before and After pictures of "Spitfire Saunter Series" by Cacheandwalk

MEGA EVENTS OVER TIME...

By Joanne Mitchell (joe222s), GAGB Social Media Officer



Mega event icon.

A mega event brings together over 500 people for a day of geocaching, shopping for supplies, stalls and often camping, all with the main aim of strengthening the wider geocaching community. This often results in inspired ways to partake in the hobby, produces friendships to last a lifetime, and more importantly fun!

The first event to take mega status was “GeoWoodstock 4” ([GC1QM7K](#)) held in Dallas County, Texas, United States, on the 27th May 2006. It had nearly 440 geocaching accounts log as attended. The first UK mega event was on Sunday the 3rd August 2008 titled “The UK’s First

Mega Event” ([GC17W59](#)). Which took place at The Cedar Court Hotel, Harrogate, Yorkshire, England. This mega event was attended by just under 1000 people (505 geocaching accounts logged as attended) from across the world!

Since the first UK mega event in 2008 there have been over 40 held across the UK. The following pages take a deeper look at all those which achieved mega status, which includes:

- GeocoinFest Europe 2019.
- Geolympix.
- London Calling.
- Piratemania.
- The Annual UK Megas.
- The Halloween Megas
- The Kent Megas

In the end, a mega event is more than just a gathering – it’s a testament to the enduring power of human connection and the boundless thrill of adventure. It’s a reminder that, in a world filled with challenges and uncertainties, the spirit of



The UK’s First Mega Event ([GC17W59](#)) by The Klever Boys.



The UK’s First Mega Event ([GC17W59](#)) by Ann_and_Brian.

exploration and the bonds of friendship can light the way forward.

As the summer sun beckons, the geocaching community eagerly awaits not one, but two UK mega events on the horizon: “Piratemia 16 Dinton Pastures – Eight Bells Nigh!” ([GCAH4MB](#)) and the “South East UK Mega 2024” ([GCAAB24](#)). With excitement brewing and anticipation building, geocachers prepare to embark on unforgettable journeys filled with treasure hunts, camaraderie, and discovery.

Beyond the excitement of the current calendar lies an uncertain future for mega events in the UK. The year 2025 looms ominously, with the prospect of no organised mega event on the horizon for the following year. Despite the fervour surrounding the upcoming events, a critical question emerges: “Have you got what it takes to take on a mega event?”

Indeed, the success and continuation of these grand gatherings hinge upon the dedication and passion of individuals willing to step forward and seize the mantle of leadership. The task of organising a mega event is no small feat – it requires vision, commitment, and a spirit of adventure. From securing venues and coordinating activities to fostering community engagement and ensuring logistical smoothness, the responsibilities are vast and varied.

Yet, for those undaunted by the challenge, the rewards are equally immense. Mega events serve as beacons

Of unity within the geocaching community, fostering bonds among adventures from near and far. Then provide platforms for creativity and innovation, where new ideas can take root and flourish. Moreover, they offer opportunities for exploration and discovery, showcasing the beauty and diversity of the UKs landscapes and heritage.

As the call to action resounds, the search for the next team to helm the UK mega event in 2026 begins. Will it be you and your fellow geocaching enthusiasts who rise to the occasion? Do you possess the passion, the ingenuity, and the determination to lead the charge into uncharted territory?

The future of mega events in the UK awaits its champions. So heed the call, rally your allies, and embark on a journey of epic proportions. For in the heart of every geocacher lies the spirit of adventure – and the potential to shape the destiny of the UKs geocaching landscape for years to come...



Camping at Piratemia 15 ([GCA2BBR](#)) by Lolls Marshall (LollyBob)

GEOCOINFEST EUROPE 2019

By Ian Ledger (N0Hope), Chair of GeocoinFest Europe 2019

Stemming from the GeocoinFest mega event in the USA, GeocoinFest Europe was born.

This event is held annually across Europe in different countries and put on by a different committee. The events focus is on geocoins (trackable decorative coins) which are sold, traded and displayed by avid collectors from across the world.

In 2019 the event “GeocoinFest Europe 2019” ([GC7TTNT](#)), came to the UK for the first time being held in Manchester, England.

The events theme was Industry, Science and Society, which is emblematic of Manchester’s renowned contribution in these areas. The cities emblem, the Worker Bee, symbolises these facets, thus serving as the events logo. Additionally, the event coins paid homage to Manchester and its theme by featuring the bee prominently.



Event fundraising geocoin from GeocoinFest Europe 2019

The event also saw two firsts. Firstly, having on display most of the geocoins from the previous UK mega events – thanks to avid collectors from across the UK! Secondly, it was the first time performing in Europe for “[The Travel Bugs](#)” and the first time they performed alongside “[Bugsy Travels & The Ammoboxes](#)”! The later going on to perform at Geocaching HQ for the 20th Birthday due to their performance here!



Bugsy Travels & The Ammoboxes performing at GeocoinFest Europe 2019

GEOLYMPIX

By Paul Smith (Simply Paul), Member of the Geolympix Team

Geolympix began in 2012 in Oxford ([GC22T2T](#)) with subsequent events in Ashridge in 2016 ([GC5XXYY](#)), and the Winter Geolympix in 2018 ([GC75FTF](#)). It began as an ambitious concept: a London Mega in 2012 reflecting the city hosting the Olympics. The idea quickly evolved into a Mega with challenges, to parallel the Olympic ethos, within easy travelling distance of London.

Teamwork was a big aspect of that first event, held at Oxford Town Hall, with a full week's programme of satellite events. The big day itself featured the '11 in 11' challenge; with attendees finding 11 different geocache types within a day. With careful planning, hard work, an early start for an Event in sight of a Webcam (Banbury, now archived), a few miles driven and a CITO to end on it was possible and a memorable element of the day for many.

In 2016 we changed the format, with different optional tasks for attendees - including finding a cache beginning with every letter of the alphabet on the day, plus numbers and the return of the popular 'FTFrenzy' element, with lots of caches being released at noon. The weather was kind, the setting perfect, the parking was free and the National Trust very helpful and accommodating, and with lots of new caches to find in the woods, it was another success.

Then in 2018, at the end of October to



Geolympix logo

give space to the busy summer calendar of Mega events. DrSolly suggested a meet in the now vacant 'Halloween Mega' slot. The venue would be Ashridge as it had worked well before for us. However, it was the coldest October day since the 90s, but hey, we had called it the Winter Geolympix in preparation!; With earlier darkness we had more of an evening caching programme giving the opportunity for a different type of geocaching. but also included events across the weekend.

In 2020 we had high hopes for a new venue: Stowe, in Buckingham. Stowe is a spectacular National Trust property. But we all remember what happened in 2020 and although everything was planned it couldn't go ahead! Then with a staff change at the venue, increasing costs we decided to abandon plans for a fourth Geolympix - for now?!

LONDON CALLING

By Brian Chapman (Brian~!), Chair of London Calling



London Calling 2023 banner by rogernordin

London Calling was originally created to bring Mega events into the capital (London) for the first time after being inspired by GeocoinFest Europe 2019 in Greater Manchester.

The first London Calling then took place at the end of August in 2021. The second London Calling took place in 2023 at our now more permanent spot in the calendar of the May Day Bank Holiday weekend. The third mega is planned for same Bank Holiday Weekend in 2025!

“London Calling 2021” ([GC8JAYF](#)) took place on the 28th August 2021 at the Methodist Central Hall, Westminster. We are very happy to be returning to this venue for London Calling 2025!

“London Calling 2023” ([GC9MAXX](#)) grew on the success of the first mega and was held on the 29th April 2023 at St. Mary’s Church, Marylebone. The theme of this event was Sherlock Holmes, with caches and merchandise both using the theme.

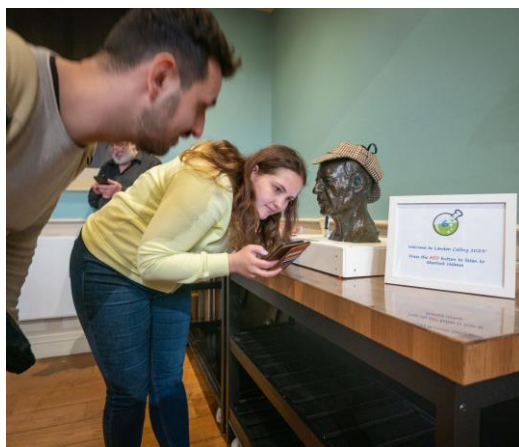
We’ve now become well known for our adventure labs, both our unique and interesting inside temporary ones at the event, and our ones outside encouraging exploration of our city.

GPS MAZE!

We’re also pleased to be creating the UK’s first totally custom-created and owned GPS Maze which will make it’s debut at London Calling 2025!

But what is a GPS Maze? It’s a temporary exhibit on the use of GPS and Geocaching since its inception 25 years ago! It is not a “maze” as such but a series of displays explaining everything geocaching related.

Lastly, keep up to date with us on social media and our website as the plans progress and we look forward to seeing you all soon!



Solving a lab cache at London Calling 2023 by rogernordin

PIRATEMANIA

By Lolls Marshall (Lollybob), Piratemia Committee Member

Piratemia was started by PopUPirate and The Cache Hoppers in 2008 as a small event with just 95 geocachers logging as attended! Over time the event gained in popularity and "PIRATEMANIA IV" ([GC2NYZG](#)) was the events first mega in 2011!

In 2013 PopUPirate made the decision to stop hosting the event, however, some of the North West 2012 mega committee couldn't let that happen and took over the running of the event in 2013. Since, the camping event is now held annually (except 2020 due to Covid) over the last weekend of July.

As part of the mega day fun two team captains gather their ships crew to compete in different challenges such as collecting golden coins and a tug-of-war to decide the winning captain!

Now in its 16th year, "Piratemia 16" ([GCAH4MB](#)) will take place on the 27th July 2024 at Dinton Pastures!



Tug-of-War at Piratemia by Dave Pyecroft (FuzzyBears)

Over the last few months Chris Johnson has been working hard on the IT side and designing the next Piratemia geocoin! Bob Aston looks for the campsite that will hold the event and then along with the rest of the crew (Iain Dean, Lolls Marshall and Ady Cross) we look and book the services. Over the next few months planning will step up a gear and Liane Southam (who is from the original Piratemia Crew has returned to the committee this year) will visit the site to plan and place our geocaching routes!

A few days before the event our crew and powder monkeys (volunteers) led by committee member Clare Barlow arrive on site and get everything setup and then its just fingers crossed it all goes ok!



Relaxing at Piratemia 15 ([GCA2B8R](#)) by Dave Pyecroft (FuzzyBears)

THE ANNUAL UK MEGAS

By Anon

The Annual UK Megas are held in early August, each by a different committee allowing for various places across the UK to be showcased. Although, the location and committee changes the main highlights remain the same, with each being a week long festival filled of geocaching related activities and events, camping and of course the main mega event itself!

Over the years this series of mega events has seen the first mega events take place in England (“The UK’s First Mega Event” ([GC17W59](#))), Scotland (“Mega Scotland: The UK’s 3rd Mega event” ([GC1XDQ0](#))) and Wales (“Mega Wales 2011 (The UK’s 4th Mega Event)” ([GC2921G](#)))! It also saw the first GPS Maze (“GPS Maze Europe – United Kingdom” ([GC66HYC](#))) in the UK as part of the “North Wales 2016 UK Mega Event” ([GC5TQ6Q](#))! It has also become the longest running annual mega event series in the UK (and possible the world)!

This year (2024) is no different with the event taking place at the South of England Showground and hosted by the South East UK Mega 2024 committee.

There are lots of different events planned for both during the day including a trip on a heritage railway, visiting the Brighton and Hove stadium and the beach and then in the evenings there are quizzes, game shows, bingo and a barn dance to look forward to!

The event starts on the 29th of July and runs until the 5th of August, with the main event the “South East UK Mega 2024” ([GCAAB24](#)) taking place on the 3rd of August!

These events take a lot of fundraising to generate the funds required to host these events and if your able please visit our [online shop](#) where [camping is now available](#) or spread the word with your local geocaching community for free! Keep up to date with all the exciting news on [social media](#) or our [website](#)!

Then next year (2025) it’s the turn of the Severn UK Mega and we are looking forward to hearing the plans for this event as they develop over the coming year... However, the future of this event is unknown with no committee coming forwards to host in 2026 and beyond...



South East UK Mega 2024 logo

THE HALLOWEEN MEGAS

By Carol Furniss (SCFurniss), Halloween Crew Member



The Halloween Mega Committee

attending. We also won an Emmy award.

The challenge for 2013 ([GC4AJ32](#)) was the venue as ideally woodland was needed to create the Halloween atmosphere. Lime Candy also joined the crew which had now reached 7 members and a new venue of Salcey Forest. The crew excelled with the caches this year but Brew-a-cache really set the bar by building a full size electric chair complete with victim!

The last Halloween Mega was held in 2014 ([GC4YCAV](#)) in Wakerley Woods, Corby. The challenges that the crew faced this year was the deciding factor that this was the end. The crew worked tirelessly to create the event everyone had come to expect and enjoy. The largest amount of caches were placed and this time the Brew-a-cache creation of a 12ft spider dropping out of the tree!

The original Halloween event was held in 2010 by SCFurniss in the basement of a pub in Little Brington, Northamptonshire and given the name of “Halloween Hides and Creepy Caches Event” ([GC2DF5J](#)). Hides were all themed but by latter standards low tech with a main hide being the coffin.

Requests started to appear for another event the following year and SCFurniss agreed with help from Brew-a-cache and Tag and the Halloween Crew was formed. In 2011 ([GC32829](#)) the coffin returned alongside some new hides in Bugbrooke, Northamptonshire and from the large number of attendees it became an annual event.

With the popularity growing a larger crew was needed and saw the addition of Doyboyz and Flamedodger. Now they had available merchandise and the first Geocoin. “HH & CC 2012 MEGA Event – Reincarnated” ([GC32G7P](#)) at Stanwick Lakes. The arrival of interactive caches drew attention from HQ with a Lackey



MEGA HERTZ ([GC5ENHH](#)) geocache from the Halloween Mega

THE KENT MEGAS

By Anon

The Kent Megas took place on the early May bank holiday weekend in 2014 ([GC4PKB2](#)), 2015 ([GC53QJ1](#)) and 2017 ([GC6JGZC](#)). With all three mega events taking place at The Hop Farm.

The Hop Farm in Kent was the venue of all three events. The Hop Farm has the largest number of Victorian Oast Houses globally. Oast Houses were used for the drying of hops with the majority being found in Kent due to the suitable conditions for growing hops. Due to this The Hop Farm was chosen as the venue. The Oast Houses also became the events

main logo and used on the merchandise.

A favourite amongst the attendees was the lab geocaches and has included Humpty Dumpty, a mad scientist, Woody (from Toy Story), ball pits, plane, buried treasure and a parachutist!

Another favourite aspect of attendees were the geocaches set for the event was the canoe geocaching series.

Unfortunately, the last Kent Mega was held in 2017 and there are no plans currently for it to come back.



Camping at The Kent Mega with The Hop Farm Oast Houses in the background from the Kent Mega Committee

MEGA SEASON 2024

The events list for this years' mega season in July/August...

Th 25 th		Piratemania - Games Night in The Marquee (GCAMVG5)
Fr 26 th		Piratemania - Party Time in The Marquee (GCAMVGA)
Sa 27 th	Piratemania 16 Dinton Pastures - Eight Bells Nigh! (GCAH4MB)	
Su 28 th	Piratemania - Pointy Pirates Flash Mob (GCANFK1)	Piratemania - Quiz Night in The Marquee (GCAMVGB)
Mo 29 th	SEM24 - Welcome to the Week (GCAGDEE)	SEM24 - BINGO! (GCAGDEG)
Tu 30 th	SEM24 - Splish, Splash, Splosh (GCAGDF8)	SEM24 - Comedy at the Camp (GCAGDF9)
We 31 st	SEM24 - A Sandwich Short? (GCAGDFC)	SEM24 - Your Starter for 10 (GCAGDFF)
Th 1 st	SEM24 - Seagulls at the Seagulls (GCAGDFK)	SEM24 - We're having a Hoedown (GCAGDFM)
Fr 2 nd	SEM24 - Railway Robbery (GCAGDFN)	SEM24 - Come On Down! (GCAGDFP)
Sa 3 rd	South East UK Mega 2024 (GCAAB24)	SEM24 - Party Time (GCAGDFQ)
Su 4 th	SEM24 - Boar on Tour - Severn Mega 2025 Event (GCAGDFR)	SEM24 - Under the Hammer (GCAGDFT)
Mo 5 th	SEM24 - Tea, Tiffin and Ta Ta (GCAGDFV)	

DEALING WITH ANIMALS...

Help to keep you safe whilst out geocaching in the countryside...



Cattle on footpath. (By Farmers Weekly).

With the weather warming up allowing us to get out geocaching in the countryside more hopefully if the weather allows – we look at staying safe around livestock!

Public rights of way pass through farmland where animals graze. Whilst it is the farmers responsibility to ensure walkers are not at excess risks, walkers must respect the countryside including the animals they meet. Unfortunately, every year there are walkers which are hurt or worse whilst out walking near animals.

Cattle

After humans, cattle are the UK's most dangerous large animal! Most are not naturally aggressive, but their size and weight can inflict lots of damage. Our

hobby means we are likely to come across them whilst out walking in the countryside and although attacks on walkers is rare, but they can occur! Therefore, knowing how to deal with cattle is essential.

The top tips to remember include:

- Giving them as much space as possible. Move slowly and never run.
- Remaining quiet.
- Turning sideways can make you appear smaller and less threatening.
- Watch the animals and be alert to any sudden changes of mood or signs of aggression,
- If you feel threatened, then leave the field at the nearest exit.
- Carry a stick or spreading your arms wide can make you seem more imposing to the cattle.

- Never walk between a cow and its calf.
- Remember that footpaths should be followed it is acceptable to divert from it if animals are blocking the route.

Sheep

Sheep will never attack walkers if you have common sense around them and you pose a far greater risk to them than vice versa. Sheep will want to get out of your way and should be given time and space to do so. It is important that you don't allow dogs or children to chase sheep as this will cause them undue stress and exhaustion.

Ticks and Lyme Disease

Although sheep don't pose a direct risk to us walking through them. Like deer they can carry Ticks, which can cause Lyme Disease.

Ticks are very tiny in size making them difficult to spot and can cause a problem at any time of year.



Tick. (By BBC News).



Removing a Tick (By Shutterstock)

Due to Ticks causing a serious illness in humans called Lyme Disease. It is advised that when your outdoors and after being outside to carry out a tick check on yourself, children and pets. If you are enough to be bitten it is important to remove the tick as soon as possible with a tick removal tool.

Lyme Disease has many serious health implications and occurs because of an infected Tick bite. Therefore, it is important to know the symptoms and seek urgent medical attention if you notice any of the following symptoms:

- Flu-like illness.
- Fatigue
- Muscle or joint pain.
- Persistent headache.
- Confusion.
- Red bulls-eye rash.

This information was found in the [“Enjoy the Outdoors but ‘be tick aware’” leaflet available here.](#)

Walking with Dogs

When walking with a dog there are two things to remember firstly you are responsible for your pets' behaviour and secondly you are at an increased risk.

Dog attacks on sheep is a big problem for farmers and can easily be prevented by keeping dogs on a lead and always within sight when off it. It is also worth knowing landowners have the right to shoot dogs which are worrying sheep!

Around cattle the same guidance applies as around sheep. However, cattle do see dogs as a threat and can become aggressive towards them. With most walkers being injured as the cows were trying to reach the dog. If cattle do start to chase or show signs of aggression let your dog off the lead or drop the lead as the dog will outrun the cattle removing them from the situation.

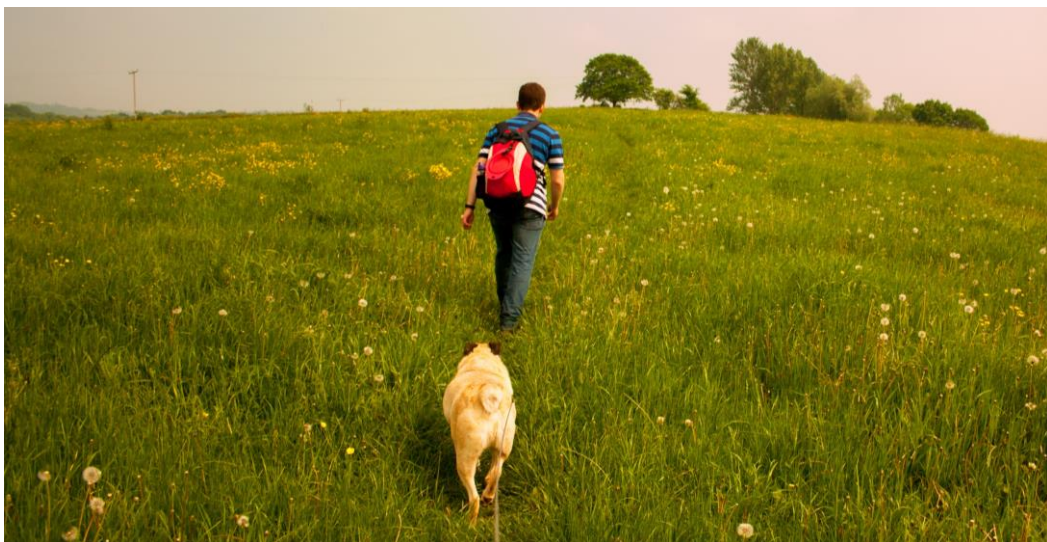
Dog faeces also contain parasites and worms which can cause serious health

implications for livestock and humans! So, always pick up after your dog and dispose of it in a bin, to ensure plastic bags don't litter the environment or end up ingested by animals.

Everyone has responsibility to reduce the risk around animals on public rights of way and knowing the risks and how to reduce it keeps everyone safe. Although, dogwalkers are at an increased risk keeping your dog under control and on a lead, also reduces the risk. Overall, the countryside is a fun and safe place to geocache!

[Please always remember that you're personally responsible for your actions whilst our taking part in geocaching and neither the GAGB or Geocaching HQ can be responsible for your actions.]

[This article is based on information found on the Cicerone (one of our member discounters) website [available here.](#)]



Dog walking in the countryside. (By Beth Grant).

GAGB REGIONS

By Lewis Grant (GAGB Secretary and Editor)

Did you know the GAGB covers more than just Great Britain – we also cover the Channel Islands, Isle of Man and Northern Ireland. Therefore, we are going to investigate what geocaching has to offer within these areas over the next few editions...

In this first instalment we are going to look at geocaching on The Channel Islands particularly Jersey and Guernsey.

The Channel Islands are an archipelago in the English Channel, just off the French coast of Normandy and 70 miles south of the English coast. Within the archipelago the two main islands are Jersey (the largest island at 46.14 square miles) and Guernsey (the second largest at 24 square miles). Both islands have temperate climates making it a perfect place to go on a geocaching holiday.



CHANNEL ISLANDS: GUERNSEY

By Jacky Meinke (twolittlepigs)

Guernsey currently has over 400+ geocaches and 12 adventure labs, which take geocachers to interesting historical locations, varied culture and stunning beautiful beaches with breathtaking cliff scenery.

The rich history includes; formidable concrete monsters and bunkers which were built by Nazi Germany during their time of occupation during World War II and Stone Age burial sites.

Guernsey's most favoured geocache is "Military Monday" ([GC37KP0](#)) with over 128 favourite points and was set by the twolittlepigs. Nearby is an example of a Nazi era defensive position, Batterie Dollman. Batterie Dollmann currently has free entry and has great views.

A series based on the Stone Age burial chambers is the Megalith Series and located across all the islands. One of the



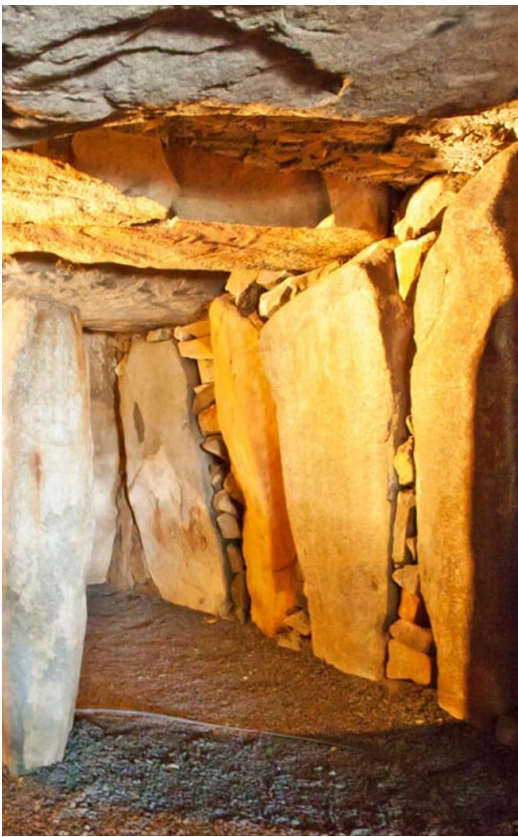
"Military Monday" ([GC37KP0](#))

best is located at the Déhus Dolmen Burial Chamber in the north of the Guernsey mainland and called Megalith 6 - Le Dehus Dolmen ([GC3VZX5](#)).

If you prefer urban geocaching then the visit the largest town and capital of



Cliffs in Guernsey.



Inside the burial chamber at "Megalith 6 - Le Dehus Dolmen" ([GC3VZXS](#))

Guernsey, Saint Peter Port. One of noteworthy geocaches here is Rooftop View ([GC38E5E](#)), which gives a views of stunning panoramas of the town and views out of the bay to the other smaller islands and nearby French coastline.

Another geocache within St Peter Port is located at Victoria Tower, which was built in 1848 to commemorate the visit by Queen Victoria and Prince Albert in 1846. The geocache is a virtual called towers of gold are still to little, ([GC891J2](#)) and requires a key (available from the nearby Guernsey Museum) to unlock it!

If you have time, the neighbouring

islands are well worth exploring too... With Herm, a little paradise, being only 3 miles from St Peter Port and easily accessed by regular ferries in about 20 minutes and currently has 32 geocaches. There is also the island of Sark which is a 40 minute ferry ride away and transports you back in time. I would personally recommend the local bike hire to allow you time to find the 33 geocachers currently hidden here.

One of the many EarthCaches which is highly recommended is Moulin Huet Bay ([GC4E7M4](#)). Located in a beautiful cove where Pierre-Auguste Renoir a French artist completed several masterpieces.

Overall, Guernsey is a friendly place where everyone is approachable and happy to help, there is heaps to learn and places to explore. Although we are a small group of dedicated geocachers we look forward to welcoming visitors. If you want to get in touch before a visit or ask questions, please see the [Geocaching Channel Islands Facebook Page](#).



View from "Rooftop View" ([GC38E5E](#))

CHANNEL ISLANDS: JERSEY

By Yovvne Mundy (mundy family)

Jersey is the sunniest place in the British Isles and has a similar landscape of Guernsey. There is lots on offer and you can't help to find something to enjoy, it's like a box of chocolates as it holds such a wide variety of geocache sizes, types, terrains and difficulties. Currently the 252 geocaches and 8 adventure labs take you along stunning cliff paths, through 15mph lanes that give priority to walkers, cyclists and horse-riders, into woods, across sandy beaches and even further out at sea, as Jersey has one of the highest and lowest tides in the world!

A geocache which takes advantage of these tides is L'Avrizon ([GCWNGX](#)). This involves a 3km walk out across the seabed at low tide to L'Avrizon tidal

island and the site of Seymour Tower. Seymour Tower is the furthest offshore of Jersey's 18th century fortifications and was built to protect the island against possible invasions from France, but never saw any action.

Another example is at Elizabeth Castle which is a 16th century castle built on the tidal island of L'Islet (The Islet) which is located just off the coast of St Helier. The castle was constructed to defend the port, here there is a virtual ([GC7B6VE](#)) and three EarthCaches ([GC9X17R](#), [GCAKG7H](#) and [GCADEEJ](#)).

Another interesting geocache is Capt'n Simply's Pirate Booty ([GC18X8Y](#)). This geocache is a letterbox on Les Minquiers an uninhabited island 15km off the south



At Capt'n Simply's Pirate Booty ([GC18X8Y](#))



The view from Jersey number one ([GCB662](#))

coast of Jersey and involves a boat or helicopter in which to get to (don't worry there is a landing pad on the island)!

If the water isn't your thing there is the first geocache placed on Jersey titled simply Jersey number one ([GCB662](#)), which is now maintained by the local geocachers. From the geocache there are spectacular views over Bonne Nuit Bay.

Another geocache recommended for visitors to the island is I ❤️ Jersey ([GC8BAGX](#)). This geocache involves the finder visiting various places of interest across the whole of Jersey. Taking you to some of the popular and some of the less popular areas in the quest to reveal

the coordinates for the final from the Wherigo. And is well worth the time in completing!

There are also several Church Micro geocaches which showcase the small and quaint churches of the island and some of the interesting architecture Jersey has on offer.

With flights from airports across the UK and Europe and boats from Portsmouth, Poole and St Malo the Channel Islands is easily accessible. Friendly locals, great food and shopping, a slower pace, it really is geocaching for the soul, and we all love to add a few more countries to our stats! So, what are you waiting for come and try geocaching on Jersey!

GEO-ART...

Discover Geo-Art...

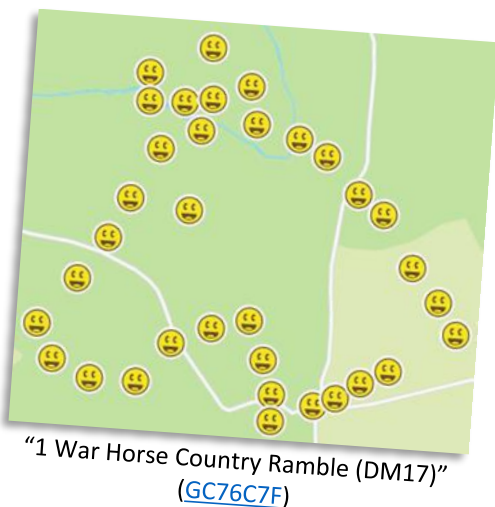
Geo-Art is a collection of geocaches which have their posted coordinates arranged in a way in which to form some an artistic outline such as an image, word or number.

Once the coordinates have been worked out, geocaches found and then logged they turn to an image full of smiley faces!

Although any type can be used to setup the Geo-Art the easiest way is by using the mystery type as it gives freedom to place the physical geocaches in one place and have the icon display in the required place. However, it isn't the only way to produce it. For example; 'MK' ([GCA94PY](#)) used the Wherigo type and the letterbox type was used to produce Mickey Mouse ([GC95ZWJ](#)).

A tradition of the Annual UK Mega Events is to release a Geo-Art related to the event. These have included images of horses at the Devon UK Mega in 2017 ("1 War Horse Country Ramble (DM17)" ([GC76C7F](#))), and West Midlands UK Mega in 2022 ("Knotty Problems 01" ([GC9WADT](#))), a simple 'MK' was used at the Milton Keynes Mega in 2023 ("MK23 Wildlife Trail A - Alliums" ([GCA94PY](#))).

Over the next couple of pages we have picked some Geo-Art currently in place around the UK and hopefully inspire you to find some or even set some...





"#001 - No Cheese, Gromit!"
([GC991CF](#))



"#1 - Acrocanthosaurus"
([GC90Y5V](#))



"1. Escape Room: The Start - Jigsaw"
([GC92722](#))



"MK23 Wildlife Trail A - Alliums"
([GCA94PY](#))



"Knotty Problems 01"
([GC9WADT](#))

PUZZLE CORNER...

Puzzles by Stoke Bunnies and NevilleDog_n_Humans...

In keeping with the mega theme in this edition of Seeker, can you give each of these GC codes a unique number?

GC4YCAV

GC32G7P

GC4AJ32

GC53P8F

GC1XDQ0

GC800TQ

GC4NCX1

GC7FWD6

GCA2BBR

GC4HBG4

GC3V2NV

GCAAB24

GC2921G

GC9V5J3

GC6JZNY

GC22T2T

GC5XXYY

GC8C8C9

COMPETITION ANSWERS

Find out the Competition answers from Edition 52

Congratulations to all those which took part and entered the competition!

The winner was Frances Wood (bashaaxa) they received a Dartmoor Geocoin!

Here are the answers for the first Seeker competition...

1. **T, T, F, F, __, __, E, N – S (6), S (7) (numbers)**
2. **9, 16, 25, __, __, 64, 81, 100 – 36, 49 (squares)**
3. **13, 17, 19, 23, __, __, 37, 41 – 29, 31 (primes)**
4. **6, 10, 15, 21, 28, 36, __, __ - 45, 55 (adding one more each time)**
5. **8, 13, 21, 34, 55, __, __, 233, 377 – 89, 144 (Fibonacci)**
6. **63, 124, 215, __, __, 728, 999, 1330, 1727 – 342, 511 (n^3-1)**
7. **12, 17, 20, 21, 22, 23, 24, __, __ - 27, 40 (numbers when spelt don't contain I)**
8. **M, A, M, J, __, __, S, O – J, A (months)**
9. **0010, 0011, 0100, __, __, 0111, 1000, 1001 – 0101, 0110 (binary)**
10. **17, 17, 20, __, __, 11, 26, 8 – 14, 23 (ascending and descending by 3)**
11. **1, 4, 1, __, __, 2, 6, 5 – 5, 9 (Pi after the decimal point)**
12. **4, 6, 12, __, __, 42, 60, 72 – 18, 30 (numbers flanked by 2 prime numbers)**
13. **PO, QM, RK, __, __, UE, VC, WA – SI, TG (1st letter up one, 2nd letter down 2)**
14. **40, 20, 10, __, __, 8, 4, 2, 1 – 5, 16 (Collatz Conjecture)**
15. **6, 14, 36, __, __, 794, 2316, 6818 – 98, 276 ($1^n + 2^n + 3^n$)**
16. **4, 7.5, 12, 17.5, __, __, 40, 49.5 – 24, 31.5 ($(n^2)/2 + n$)**
17. **53, 73, 103, __, __, 211, 227, 263 – 107, 131 (primes in base 8)**
18. **E, T, D, __, __, Z, Z, A – V, V (numbers in Dutch)**
19. **1, __, __, 256, 625, 1296, 2401, 4096 – 16, 81 (power of 4)**
20. **4, 18, 48, 100, 180, __, __, 648 – 294, 448 (cube - square)**

COMPETITION TIME

A chance to win a £15 GAGB Shop Gift Voucher...

Some puzzle setting geocache owners often use “non verbis, sed rebus” for their puzzles. Here’s a few to practice on!

1

Pot00000000

2

na**fish**
na**fish**

3

Polmumice

4

Lang4uage

5

XQ**Q**Q**M**ON

6

COMPHD**M**ONS

7

22 L**td** 33 M**ob**


8

PEEP

9

*CON**T**RO*

10

BLONDE 

11

EC**I**JA

12

OT**SQ**1

13

NOONT

14

MIGR**A**INE

15

PREIST

16

HOROBOD

17

S π **KY**

18

TE**K**CIT

19

LITTLE**BY**

20

MILONELION

The closing date of the competition is the 1st of July 2024 with all correct entries received before this date being entered into a random draw to win a £15 GAGB Shop Gift Voucher. To enter the competition and have the opportunity of winning, send an email with your answers, name, geocaching name and postal address to editor@gagb.org.uk

The full list of answers and winner will be announced in the next edition!

CACHER CHATS...

With the GeocachingVlogger...

This edition of Seeker saw Lewis Grant (NevilleDog_n_Humans, Secretary and Editor) chat to Joshua Johnson aka The Geocaching Vlogger.



Joshua Johnson aka The Geocaching Vlogger

What is your geocaching name?

I geocache under the nickname of the GeocachingVlogger but I am best known as being The Geocaching Vlogger.

How did you first discover geocaching?

I heard about it from a friend and decided to give it a try. On Father's Day in 2008, I received a handheld GPSr, and from that moment I found my first geocache, I was absolutely hooked. After all, who can resist the allure of a thrilling scavenger hunt? As a child of the '80s, I had a deep affection for the movie "The Goonies," and when I discovered that geocaching offered a global scavenger hunt experience, I knew I had to do it!

What do you enjoy most about caching?

I find immense pleasure in the aspects of geocaching that resonate with the

broader community. This hobby not only leads me to discover unique and hidden places that would otherwise remain unknown to me but also indulges my fascination for intricate gadget caches. Additionally, the connections I've forged with fellow geocachers have enriched my experience.

In light of the captivating places that geocaching has introduced me to, I embarked on a new venture—a travel podcast titled "Treasures of Our Town." If you're interested, you can tune in to the podcast on all of the main platforms or [click here!](#)

What makes the perfect geocache for you and is this the same/different to one which makes the perfect Vlog?

The qualities that elevate a geocache to greatness seamlessly translate into the realm of creating engaging videos. Central to successful online video content is the art of storytelling. My approach involves consistently posing the question, "What is the story here?" and building the video around that narrative.

This principle extends to crafting a creative geocache as well. The challenge is to devise a geocache experience that stands out distinctly for the finder. The same thought process applies: How can I make this geocache different enough to leave a lasting impression on those who discover it?

How did you go from Geocacher to Vlogger?

It all started quite accidentally. Back when my kids were younger, I felt the urge to capture many precious moments of their childhood on video. That's when I made a spur-of-the-moment decision to buy a FLIP camera, which I found on Craigslist. I remember meeting the seller in a parking lot to seal the deal. Eager to test the camera, I decided to film myself as I embarked on a geocaching adventure.

As I uploaded that video to YouTube, I couldn't help but cringe at the quality, realizing it was far from perfect. Nevertheless, it marked the humble beginning of my YouTube journey. At that time, I was engrossed in watching family vloggers on YouTube who documented their everyday lives, no matter how mundane. It was during this period that I recognized the unique and captivating aspect of geocaching.

I made a commitment to create at least one long-form YouTube video every

week, and it's almost hard to believe that this dedication began nearly 13 years ago. Remarkably, I've managed to uphold this promise, and I still haven't missed a single week.

What is The Geocaching Vlogger?

On the internet, I'm known as "The Geocaching Vlogger." For nearly 13 years, I've been sharing my geocaching adventures on platforms like YouTube, TikTok, Facebook, and Instagram. Across all these outlets, I've posted over 2000 videos, amassing a devoted following. Geocaching has transported me to remarkable locations worldwide, allowing me to explore places beyond my wildest dreams. In 2021, I was honored with the title of "Best Outdoor Travel Blogger" by the Twins Cities Collective.

Out of all your videos what is your personal favourite?

Undoubtedly, my favorite video production to date has been the one centered around the Adventure Lab Cache in Woodstock, IL, intricately



Picture taken from "GEOCACHING IN GROUNDHOG DAY! (Watch till the end!)" vlog

weaving in the iconic locations from the movie Groundhog Day. Upon viewing, you'll notice how closely it mirrors the plot of the film. The owner of the "Groundhog Day" house, featured in the video, added an extra layer of greatness with her wonderful contribution. [Click here to watch it!](#)

Which country would you most like to geocache in?

Lately, Iceland has been a frequent topic among friends who've shared their great experiences visiting the country. Inspired by the beautiful landscapes showcased in the "Walter Mitty" movie, my desire to explore Iceland has intensified. Specifically, I'm keen on the idea of finding a geocache situated next to a volcano.

What advice would you give others wanting to Vlog?

When diving into the world of vlogging, the top piece of advice I always emphasize is to be authentic—simply be yourself. Your uniqueness sets you apart, and when you embrace that, your content naturally stands out. Another key aspect is persistence over time. While the allure of going viral is strong, what truly matters is consistency. A steady stream of content builds a more reliable and engaged audience.

If you decide to venture into vlogging, let it stem from a genuine love for the craft and a belief that you have something valuable to share with the world. Define your purpose and mission—vlogging becomes most meaningful when it's driven by a sense of purpose.

What is the future for The Geocaching Vlogger?

My focus for 2024 will be on events and completing Geotours. Nothing is finalized yet, but I believe I will be heading to Geowoodstock 20 this year in Flagstaff AZ.

Will you be visiting the UK/What would it take for us to attract you to the UK?

I would love to visit the UK. Sometimes MEGA events sponsor my travels in exchange for highlighting their event and promoting the area. If something like that could be worked out it would be more likely a visit would happen.



Joshua Johnson finding a hard to reach geocache

GEOCACHING BY CRUISE SHIP

By Martin Jenkins (cf&d8 and TheGeocachingcruiser)

My real name is Martin Jenkins and I geocache alongside my wife as cf&d8. Our holidays are spent aboard cruise ships all over the world! In order to share my experiences and document our trips with the wider geocaching community I recently started uploading vlogs to YouTube under the name [The Geocaching Cruiser](#).

We discovered geocaching whilst on a river cruise in the Czech Republic. We saw a friend dash along a riverbank and start scrambling over a WW2 artillery piece and after a discussion we first heard about geocaching. Our first find was “Litomerice ve filmu #1 (Schody z centra)” ([GC2Q09W](#)) which we found in a rusty drainpipe in a subway – oh the glamour!

Since our first geocaching cruise we have geocached in 55 countries around the world, and this has included some very interesting trips. These have included transiting the Suez Canal with the USS Enterprise at the head of our southbound convoy – all shipping through has to be in convoy. Other cruises have included seeing the Northern Lights and the Inside Passage off the coast of Alaska. We have also been on several River Cruises including along the Elbe and another which took in the Rhine, Main and Danube.

During all the cruises we have managed to geocache, either on our own when



Geocachers cf&d8

there are no excursions that suited us and geocaching allowed us to go off and find something off the beaten tourist path or part of an excursion. Whilst on excursions we have found it to be very handy to get a geocache or two but at other times very frustrating due to being part of a larger group! However, we have found geocaches whilst returning to an excursion coach, waiting for a train, or nipping into a museum and using there free WiFi like when we were in Bolivar Square in Cartagena, Columbia, so it's swings and roundabouts!

My advice if you're going to try and geocache whilst abroad, it's even more important post-Brexit to search and download geocaches in the places you're going to before leaving home.

Also, my experience is that the mapping search function of Groundspeak isn't very good. It's usually better to have a map app open on a second device, so you can check if you're where you need to be, especially if you're doing an excursion to a specific place. (I haven't used any other geocaching related app so unable to comment).

Also expand the search to include the port and nearby area, towns and cities you're visiting. As it can't hurt to have more geocaches downloaded than you need, rather than to find your search results being left behind as your transportation moves and then discover later there was a geocache where you just visited were. One that still rankles me is the time I missed out on the "Italian Chapel" ([GC4FJ5X](#)) in Orkney, due to only saving geocaches in Kirkwall! Luckily, we will be returning there this summer, so I'll have a second chance!

An important note to make is that we have found that English or an English version is on most geocache pages whilst abroad but, especially in Europe, don't be surprised if there's only a native tongue description! However, there are many apps including Google Translate which can help translate the information and gives access to maybe that vital hint!

Overall, the standard and condition of geocaches whilst abroad is generally of the same high standard as in the UK. However, there have been some very "imaginative" ones including "TB Hotel der Kescherinnen" ([GC5X2KR](#)) at Melk Abbey springs to mind!

Did you know it's also possible to find geocaches whilst aboard a cruise ship like the time I found the "Runes Fyr - Virtual Reward 3.0" ([GC9P68R](#)) geocache, when I managed to take the required picture to log it whilst in the balcony aboard the ship!

Later this year we have planned trips to several new countries and some previously visited ones where we aim to continue geocaching...

Lastly, like I mentioned at the very beginning, I have started doing vlogs on YouTube ([check them out here!](#)), so if you'd like to have a watch and offer any suggestions, that would be fantastic! (By the way I never reveal any geocache location spoilers and surprises!)



Finding the "Runes Fyr - Virtual Reward 3.0" ([GC9P68R](#)) geocache whilst aboard the ship!

YE OLE SURVEY MONUMENTS

By Chris Brooke (Ye Ole Survey Monuments Series Administrator)



Trigpoint at Caulkleys Bank., Yorkshire

Geocaching has always been a journey of exploration, uncovering hidden treasure and connecting with the rich history of our surroundings and all in the name of adventure. Therefore, we are thrilled to announce the revival of the Ye Ole Survey Monuments (YOSM) series, a celebration of geocaching heritage that invites enthusiasts to rediscover the charm and significance of the survey monuments.

Survey monuments are often overlooked in our modern, fast-paced world, but are the silent witnesses to our geographic history. These markers were strategically placed to aid in mapping and land surveying making them integral pieces of our cultural landscape. The YOSM series is based on these historical landmarks and encouraging geocachers to engage

with this unique history.

The original Ye Ole Suevey Monuments (YOSM) series started on the 26th March 2002 by geocacher “outforthehunt” who set a virtual travelling geocache titled “Ye Ole Survey Monuments- Porthcurno” ([GC45CC](#)). This geocache saw geocachers to specific survey monuments, pillars, surface blocks, rivets or bolts scattered across the country. As the geocache travelled it allowed multiple logs to be made as each spot was a distinctive destination, although this was archived in 2017 by Groundspeak.

Since this first geocache, the monuments have developed a deep bond with the geocaching community. This is mainly in part due to the passion and hard work of “outforthehunt” which played a pivotal

role in bringing the significance of these monuments to our hobby.

whichever way you can:



An example of a YOSM

As we now embark on the revival of the YOSM series (22 years since the first was set), we pay thanks to “outforthehunt” for raising the awareness of these monuments and invite geocachers to follow in their footsteps and grow the legacy of the series.

The new series focuses on physical geocaches and will be similar in format to other geocaching series in the UK. However, the success of the YOSM series from now on will rely on the enthusiastic participation of the wider geocaching community. So please get involved in

Place YOSM Geocaches

Please consider placing YOSM caches in historically significant locations in your area. Thus, allowing survey monuments to be highlighted across the country.

Spread the Word

Utilize your geocaching networks, clubs, and social media platforms by spreading the word of the new YOSM series! Encourage other geocachers to get involved by sharing their experiences and grow the YOSM series.

Share Your Discoveries

As you embark on YOSM adventures, share your discoveries and stories far and wide. Whether it's uncovering a hidden survey monument or learning about the history behind it, your experiences can inspire others to go on a similar journey...

The Ye Ole Survey Monuments series is more than just a geocaching endeavor; it's a tribute to our shared history and a call to rediscover the beauty in the details that surround us and go by unnoticed.

To help support us consider joining our Facebook Group YOSM Geocachers or if you want to know more about placing a YOSM geocache visit our official website here: [yosm.org.uk](https://www.yosm.org.uk). All your support is crucial in making this geocaching revival a success, and we look forward to having you join us on this exciting journey of rediscovery! We would also like to thank you for reading our article!

GAGB CITO WEEKS UPDATE

Find out more about our upcoming CITO Weeks...



The GAGB CITO (Cache In Trash Out) Weeks 2024 have been held since 2013. Initially the initiative began as a CITO Weekend to celebrate the GAGB's 10th anniversary and eventually evolved into a full week of CITO and now runs over two weeks.

As a thank you to those geocachers which get involved there are two GAGB profile badges available one for the organisers and one for the attendees. Also, our CITO weeks now fall into the official Geocaching.com's own CITO souvenir seasons.

It is best to start organising your GAGB CITO events as early as possible and the first event has already gone live!

The first GAGB CITO event (GAGB 2024: Bathtime Buddies Kayaking Clear-up ([GCAM62F](#))) has already been published

and will take place on the 25th May between 9am and 12pm. The event will see geocachers take to the River Avon litter-picking as they go between The Boathouse, Newbridge and the locks at Saltford Brassmill – we would like to take this opportunity to thank them for organising the event.

[Find out more on our website by clicking here!](#)



A previous GAGB CITO event

AN A TO Z OF THE GAGB...

What makes up the A to Z of the GAGB?

- A wards** (annual awards for noteworthy geocachers and geocaches)
- B enefits** (we offer all our members membership discounts)
- C ITO Week** (a week of cache in trash out)
- D uke of Edinburgh's Award** (assessing for the award)
- E vents** (Roving Events are held across the GAGB region)
- F orums** (online geocaching discussions)
- G LAD** (a database of landowner agreements)
- H elp** (we offer help to both Landowners and Geocachers)
- I ntroduction to Geocaching Sessions** (teaching geocaching)
- J ersey and Guernsey** (GAGB also covers the Channel Islands and Isle of Man)
- K it** (a useful list of equipment all geocachers require)
- L ogs** (free online log sheet generator)
- M embers** (all our supporters of the GAGB)
- N ew Merchandise** (expanding our merchandise lines)
- O nline Shop** (for all your geocaching needs)
- P ermission** (information on how to get landowner permission)
- Q uick Response** (through our dedicated phone line and email address)
- R egional Representatives** (GAGB Friends which represent your area)
- S eeker** (a quarterly free online magazine)
- T rackables** (our GAGB Racing Hound Trackable Dog Tags)
- U K Mega Events** (we offer sponsorship to geocaching events)
- V olunteers** (the GAGB Committee are all volunteers)
- W eekend of SWAG** (an annual weekend encouraging quality SWAG)
- X and Social Media** (we are active on X (Twitter), Facebook and Instagram)
- Y ou** (the GAGB is for all of YOU, the geocachers within the GAGB region)
- Z azy Geocoins** (the annual National Park Geocoin Series)

PIRATEMANIA 16

25TH JULY -
29TH JULY 24

MEGA

Camping: 25th July to 29th July 2024
Main Event: Saturday 27th July 2024

GCAAB24 South East UK Mega 2024 3 August

At The South of England Showground, Selsfield Road, Ardingly, RH17 6TH

Check out our website www.mega2024.org.uk to order your
Geocoins, Clothing and other Merchandise.

There are only a few Supporter's Packs remaining, and don't forget
to choose your number lucky number in the Mega in a Box draw.

Camping is from 29 July to 5 August – booking is now open.

Side Events are now published.



www.mega2024.org.uk



Follow us on Facebook



Discover me at geocaching.com - SEMNW7

SEVERN UK MEGA 2025

28th JULY - 3rd AUGUST 2025

- MONTHLY SUBSCRIPTION • 100 CLUB •
- CLOTHING & MERCH ONLINE •

VOLUNTEER
REGISTRATION OPEN

We're also seeking sponsorship,
please get in touch!



MEGA



LONDON CALLING 2025

**LONDON'S BIGGEST
GEOCACHING EVENT
RETURNS!**

**THE DEBUT OF THE
UK GPS ADVENTURE MAZE**

**THE UK'S FIRST
BLOCK PARTY**



**THURSDAY 1ST
TO
SATURDAY 3RD
MAY 2025**



**SATURDAY 3RD
MAY 2025**

CENTRAL HALL, WESTMINSTER

STAY UP TO DATE AT WWW.LONDONCALLINGNOW.CO.UK

GAGB MEMBER DISCOUNTS

Please don't share the codes with non-members!

		
GAGB Shop	Base of Tree	NE Geocaching
	 EXCLUSIVE MEMBER DISCOUNTS!	
All Cached Up		Rainbow Caching
		
Outdoor GPS Shop		
		
Geocaching Scouts	Mountain Warehouse	SideTracked Shop

**CLICK HERE FOR MORE INFORMATION ON THE
GAGB MEMBERSHIP DISCOUNTS!**